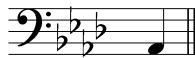


Lesson DDD: Figured Bass

Exam:

Question 1a: According to the figured bass signature, what pitches must appear above this bass note?



⁵/₃

[Answer: C and E^b. Feedback if correct: "Correct!" Feedback if incorrect: "Incorrect. This figured bass signature implies that a C and an E^b must appear above the bass."]

Question 1b: According to the figured bass signature, what pitches must appear above this bass note?



⁶/₄

[Answer: A and C[#]. Feedback if correct: "Correct!" Feedback if incorrect: "Incorrect. This figured bass signature implies that an A and a C[#] must appear above the bass."]

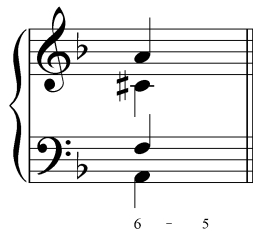
Question 1c: According to the figured bass signature, what pitches must appear above this bass note?



⁶/₃

[Answer: C and F. Feedback if correct: "Correct!" Feedback if incorrect: "Incorrect. This figured bass signature implies that a C and an F must appear above the bass."]

Question 2a: In which voice will the "6 - 5" motion indicated by the figured bass occur? And to which pitch should that voice move?



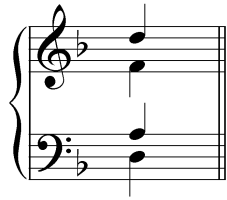
[(Students must enter two answers.) Answer: Tenor and E. Feedback if correct: "Correct! The "6 - 5" figure indicates that the tenor must step down to E." Feedback if incorrect: "Incorrect. The "6 - 5" figure indicates that the tenor must step down to E."]

Question 2b: In which voice will the "8 - 7" motion indicated by the figured bass occur? And to which pitch should that voice move?



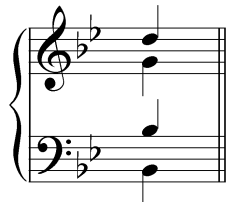
[(Students must enter two answers.) Answer: Tenor and G. Feedback if correct: "Correct! The "8 - 7" figure indicates that the tenor must step down to G." Feedback if incorrect: "Incorrect. The "8 - 7" figure indicates that the tenor must step down to G."]

Question 3a: [Multiple choice.] Which figured bass signature would be used to represent this chord?



[Options: “ $\overset{5}{3}$,” “ $\overset{6}{3}$,” and “ $\overset{6}{4}$.” Answer: “ $\overset{5}{3}$.” Feedback if correct: “Correct! This is a root position triad.” Feedback if incorrect: “Incorrect. This is a root position triad (represented by $\overset{5}{3}$).”]

Question 3b: [Multiple choice.] Which figured bass signature would be used to represent this chord?



[Options: “ $\overset{5}{3}$,” “ $\overset{6}{3}$,” and “ $\overset{6}{4}$.” Answer: “ $\overset{6}{3}$.” Feedback if correct: “Correct! This is a first-inversion triad.” Feedback if incorrect: “Incorrect. This is a first-inversion triad (represented by $\overset{6}{3}$).”]

Question 3c: [Multiple choice.] Which figured bass signature would be used to represent this chord?



[Options: “ $\overset{5}{3}$,” “ $\overset{6}{3}$,” and “ $\overset{6}{4}$.” Answer: “ $\overset{6}{4}$.” Feedback if correct: “Correct! This is a second-inversion triad.” Feedback if incorrect: “Incorrect. This is a second-inversion triad (represented by $\overset{6}{4}$).”]

Question 4a: According to the figured bass signature, what pitches must appear above this bass note?



[Answers: B, D \sharp , and F \sharp . Feedback if correct: “Correct!” Feedback if incorrect: “Incorrect. This figured bass signature implies that B, D \sharp , and F \sharp must appear above the bass.”]

Question 4b: According to the figured bass signature, what pitches must appear above this bass note?



[Answers: F \sharp , A, and B. Feedback if correct: “Correct!” Feedback if incorrect: “Incorrect. This figured bass signature implies that F \sharp , A, and B must appear above the bass.”]

Question 4c: According to the figured bass signature, what pitches must appear above this bass note?



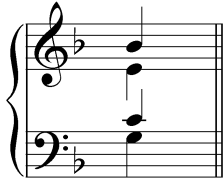
[Answers: F \sharp , G \sharp , and B. Feedback if correct: “Correct!” Feedback if incorrect: “Incorrect. This figured bass signature implies that F \sharp , G \sharp , and B must appear above the bass.”]

Question 4d: According to the figured bass signature, what pitches must appear above this bass note?



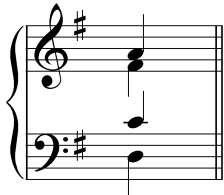
[Answers: C, E, and G. Feedback if correct: "Correct!" Feedback if incorrect: "Incorrect. This figured bass signature implies that C, E, and G must appear above the bass."]

Question 5a: [Multiple choice.] Which figured bass signature would be used to represent this chord?



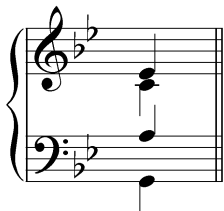
[Options: "7," "6/5," "4/3," and "4/2." Correct answer: "4/3." Feedback if correct: "Correct! This is a second-inversion seventh chord." Feedback if incorrect: "Incorrect. This is a second-inversion seventh chord (represented by 4/3)."]

Question 5b: [Multiple choice.] Which figured bass signature would be used to represent this chord?



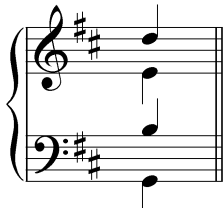
[Options: "7," "6/5," "4/3," and "4/2." Correct answer: "7." Feedback if correct: "Correct! This is a root position seventh chord." Feedback if incorrect: "Incorrect. This is a root position seventh chord (represented by 7)."]

Question 5c: [Multiple choice.] Which figured bass signature would be used to represent this chord?



[Options: "7," "6/5," "4/3," and "4/2." Correct answer: "4/2." Feedback if correct: "Correct! This is a third-inversion seventh chord." Feedback if incorrect: "Incorrect. This is a third-inversion seventh chord (represented by 4/2)."]

Question 5d: [Multiple choice.] Which figured bass signature would be used to represent this chord?



[Options: "7," "6/5," "4/3," and "4/2." Correct answer: "6/5." Feedback if correct: "Correct! This is a first-inversion seventh chord." Feedback if incorrect: "Incorrect. This is a first-inversion seventh chord (represented by 6/5)."]

Question 6a: According to the figured bass signature, what pitches must appear above this bass note?
 (Remember to apply the chromatic alterations to the correct voice.)



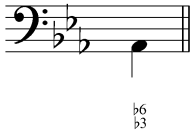
[Answers: C[#] and E. Feedback if correct: "Correct!" Feedback if incorrect: "Incorrect. This figured bass signature implies that C[#] and E must appear above the bass."]

Question 6b: According to the figured bass signature, what pitches must appear above this bass note?
 (Remember to apply the chromatic alterations to the correct voice.)



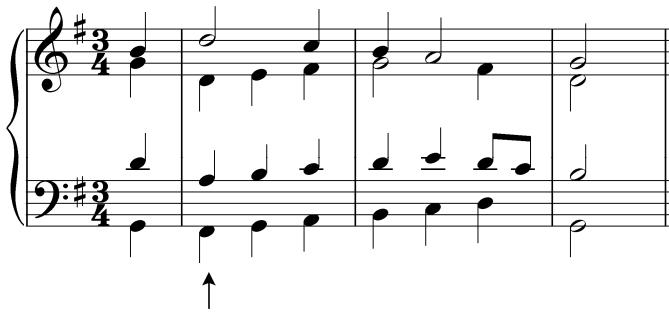
[Answers: E and A[#]. Feedback if correct: "Correct!" Feedback if incorrect: "Incorrect. This figured bass signature implies that E and A[#] must appear above the bass."]

Question 6c: According to the figured bass signature, what pitches must appear above this bass note?
 (Remember to apply the chromatic alterations to the correct voice.)



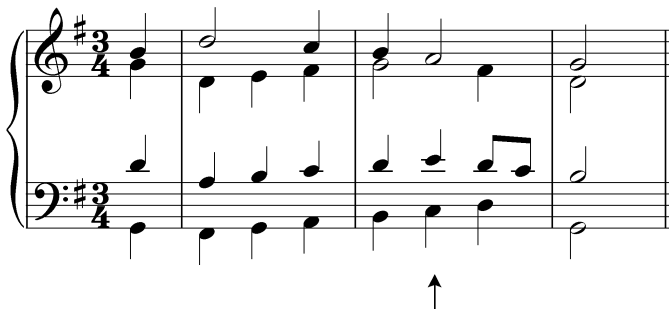
[Answers: C^b and F^b. Feedback if correct: "Correct!" Feedback if incorrect: "Incorrect. This figured bass signature implies that C^b and F^b must appear above the bass."]

Question 7a: What roman numeral and figured bass signature should appear under the chord indicated by the arrow? (J.S. Bach, "Aus meines Herzens Grunde," BWV 269, mm. 5-7.)



[Answer: V⁶ or V₃⁶. Feedback if correct: "Correct!" Feedback if incorrect: "Incorrect. This chord should be represented with "V⁶."]

Question 7b: What roman numeral and figured bass signature should appear under the chord indicated by the arrow? (J.S. Bach, "Aus meines Herzens Grunde," BWV 269, mm. 5-7.)



[Answer: ii_5^6 or ii_3^6 . Feedback if correct: "Correct!" Feedback if incorrect: "Incorrect. This chord should be represented with " ii_5^6 ."]]